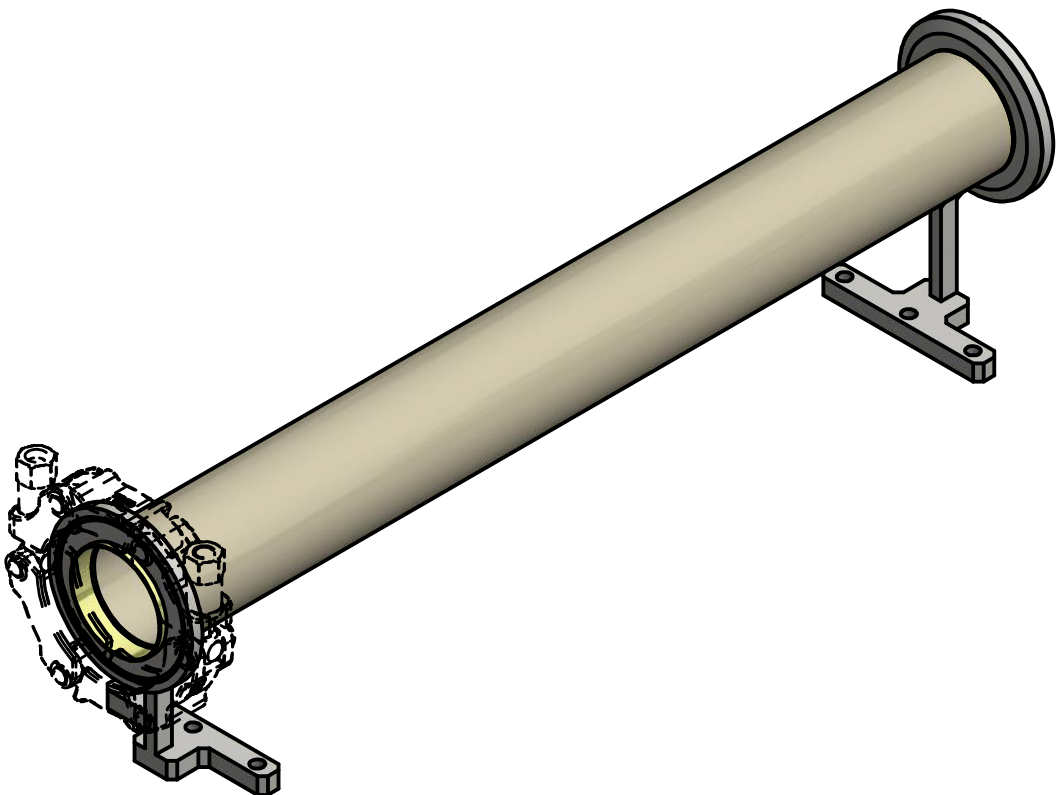
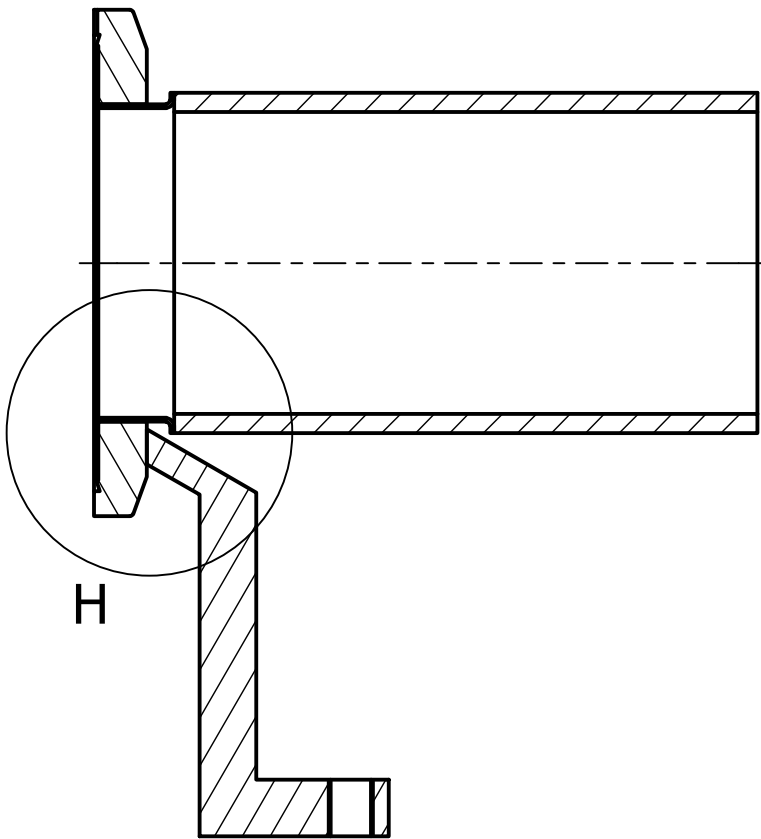


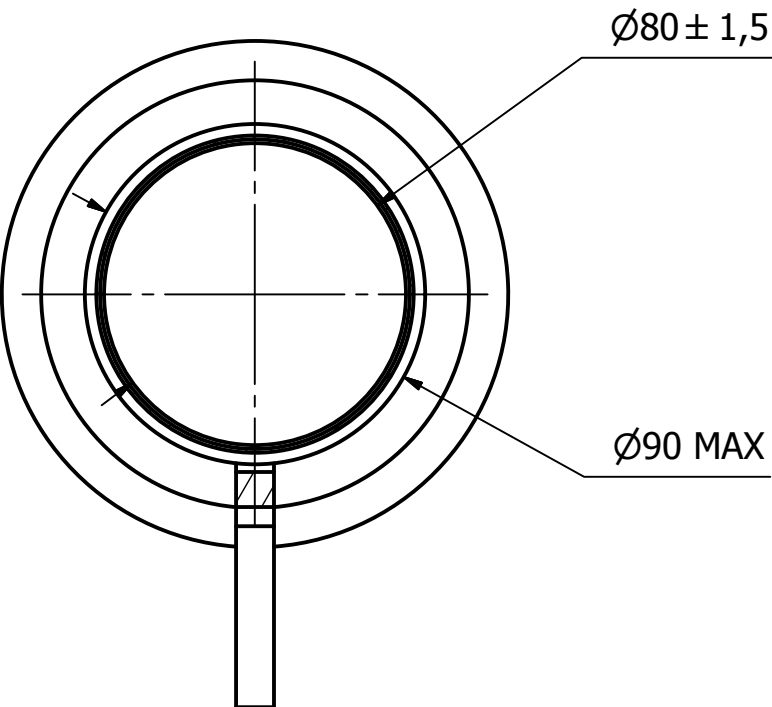
REVISION HISTORY			
REV	REVISION COMMENT		DATE
-	Released		APPROVED

E-E ( 1 : 2 )

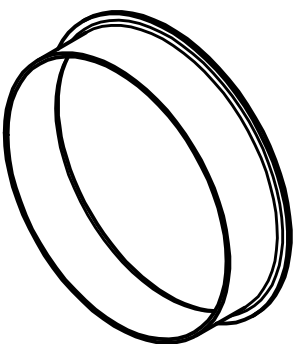


"Quick clamp" shown as reference.

B-B ( 1 : 2 )





"End of ceramic chamber"  
shown as reference.



Note:

1. Ceramic material to conform with a vacuum level of 1E-11 mbar and sp. desorption rate <1E-12 mbar l/s cm^2. He-leak tight to 1E-9 mbar l/s.
2. Transition piece from ceramics shown as principal solution.
3. Metalize both ends of the ceramic pipe for bracing.
4. The outer faces of the ceramic pipe, can be grinded to achieve the given tolerances.
5. Supports shall be welded to the flanges.

12	2	QCF100 Blank flange	9000015485	AISI 304			
3	2	End of ceramic chamber	7103033536	Dilver P 1.3981.			
2	2	Support for ceramic chamber		AISI 304			
1	1	Ceramic chamber		Ceramic Al2O3			
POS.	QTY.	DESCRIPTION	PRODUCT NO.	MATERIAL			
 <b>DANFYSIK</b>  www.danfysik.com danfysik@danfysik.dk Phone: +45 7220 2400		Size: <b>A2</b>	Customer:	Surface machining:	Note:		
		Scale: <b>1 : 5</b>	Order No.:	Surface treatment:			
					Material:	Mass: <b>6,8 kg</b>	
		Important:  This document contains informations which are the property of DANFYSIK A/S Denmark. It is submitted to you in confidence that it will not be disclosed or transmitted to others or used for manufacturing without DANFYSIK's authorization in writing.		Projection: 	Dimensions without tolerance indication:  <b>EN 22768 - mk</b>		Description: <b>Ceramic chamber assembly B</b>
				Product No.:  <b>7103033656</b>	Rev.:  <b>-</b>		
App. by	Date:			Name:	Doc. No.:		
Check by				KFL			
		Drawn by	16-11-2016	AANA	CAD Program: Inventor AIS 2016	Plot date: File name: 7103033656.idw	Sheet: <b>1 of 1</b>